



call to **artists**

Call to Artists - Request for Proposals Beverly Entrance Feature Public Art Project

The Beverly Entrance Feature public art competition, open to all Canadian visual artists, is held in accordance with the City of Edmonton policy "Percent for Art to Provide and Encourage Art in Public Areas" (C458C).

Budget: \$23,000 CAD (maximum, all inclusive)
Deadline for Submissions: 4:30 pm on Friday, January 14th, 2011
Installation: June 2011

For more information, contact the Edmonton Arts Council:
phone (780) 424-2787 or email: publicart@edmontonarts.ca

Beverly Entrance Feature

Background

The Beverly Entrance Feature public art competition, open to all Canadian visual artists, is held in accordance with the City of Edmonton policy “Percent for Art to Provide and Encourage Art in Public Areas” (C458C).

Beverly Heights

Originally part of the Town of Beverly, Beverly Heights became a part of northeast Edmonton in 1961. The Town of Beverly was a coal-mining town with over twenty mines operating in the area during the town’s history. In modern Edmonton, there are five neighborhoods in the area occupied by the Town of Beverly and the surrounding coalmines: Abbottsfield, Beacon Heights, Bergman, Beverly Heights, and Rundle Heights.

Allan Merrick Jeffers, who designed the Alberta Legislature Building, designed the old Town Hall, a multipurpose facility that housed police, courts and the fire service, a dance hall, and a school. Located on the same site was the town jail and a corral. Emily Murphy, one of the famous five, worked in the Beverly town hall as a Justice of the Peace.

Street Enhancement Project

Beverly Business Revitalization Zone (BRZ) is one of the 12 BRZ areas in the City of Edmonton, located in the northeast portion of the City along 118th Avenue between 50th Street and Abbottsfield Road.

In 2007, the City of Edmonton and the Beverly Business Association recognized a need to improve the quality of lighting and the streetscape in general along 118th Avenue between 42nd Street and 50th Street. The project includes new street light poles, pedestrian oriented light poles, wider sidewalks, a community plaza at the intersection of 45th Street and 118th Avenue, and new banners, entrance feature poles and additional curved wall entrance features at the intersection of 50th Street and 118th Avenue.

Locations for Artwork

There are two site locations for public artwork within the Beverly Entrance Feature, located at the intersection of 118th Avenue and 50th Street. **Artists must include both site locations in their artwork proposal.** Renderings are provided to illustrate the site locations.

Artwork Theme

It is suggested that the content for the proposed permanent public artwork may incorporate the following thematic concepts:

- Depict the history of Old Town Beverly;
- Have a 'timeless' quality in terms of design expression and durability.

Art Location A and B

Suitable for a two-dimensional or low relief three-dimensional public artwork. Suggested mediums for the artwork could include, but are not limited to, brick or tile artwork, relief sculpture, tile mosaic, etc. The Artist should provide preferred construction details for artwork installation on the curved concrete wall. The City of Edmonton's structural engineering consultants will review construction details before actual installation. The artwork proposal should reflect relevance to contemporary art practices. The curved walls face west at the intersection of 118th Avenue and 50th Street, and are made of cast concrete. Suggested maximum dimensions are as follows:

Wall A - height 75cm x length 900cm

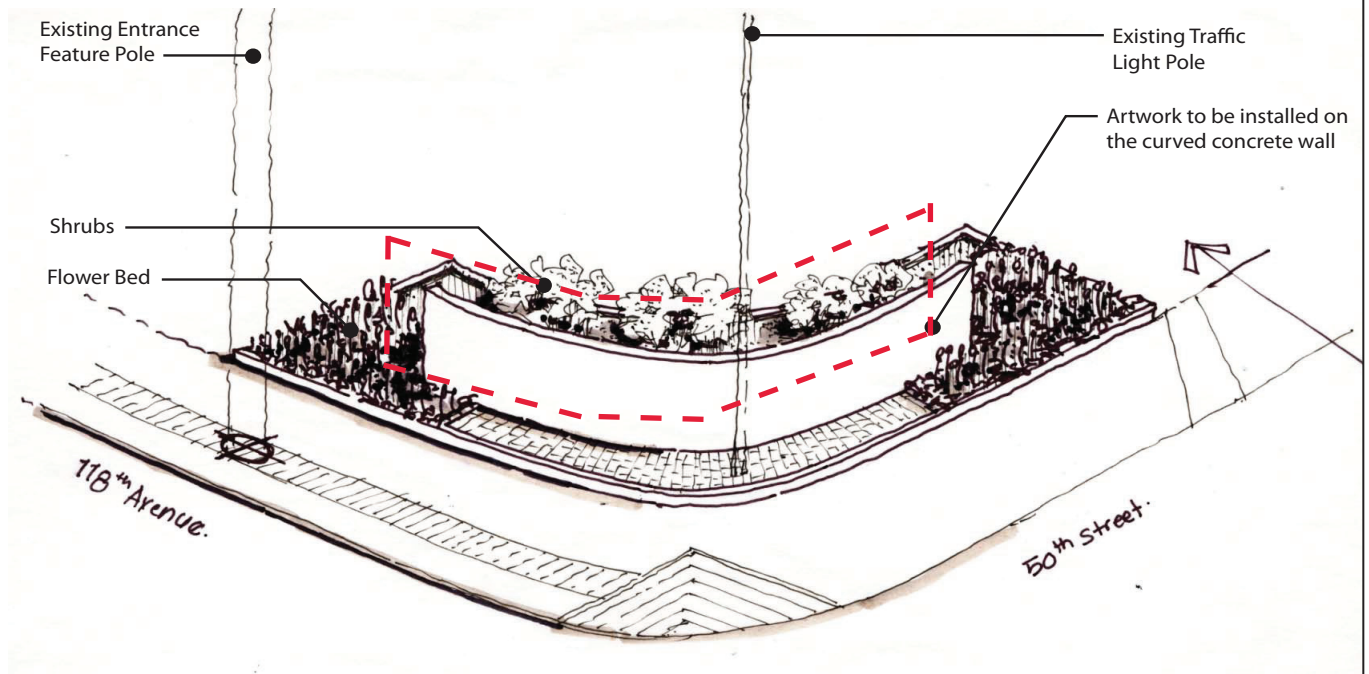
Wall B - height 75cm x length 800cm

Artwork Design Parameters

The artwork must adhere to the following design parameters:

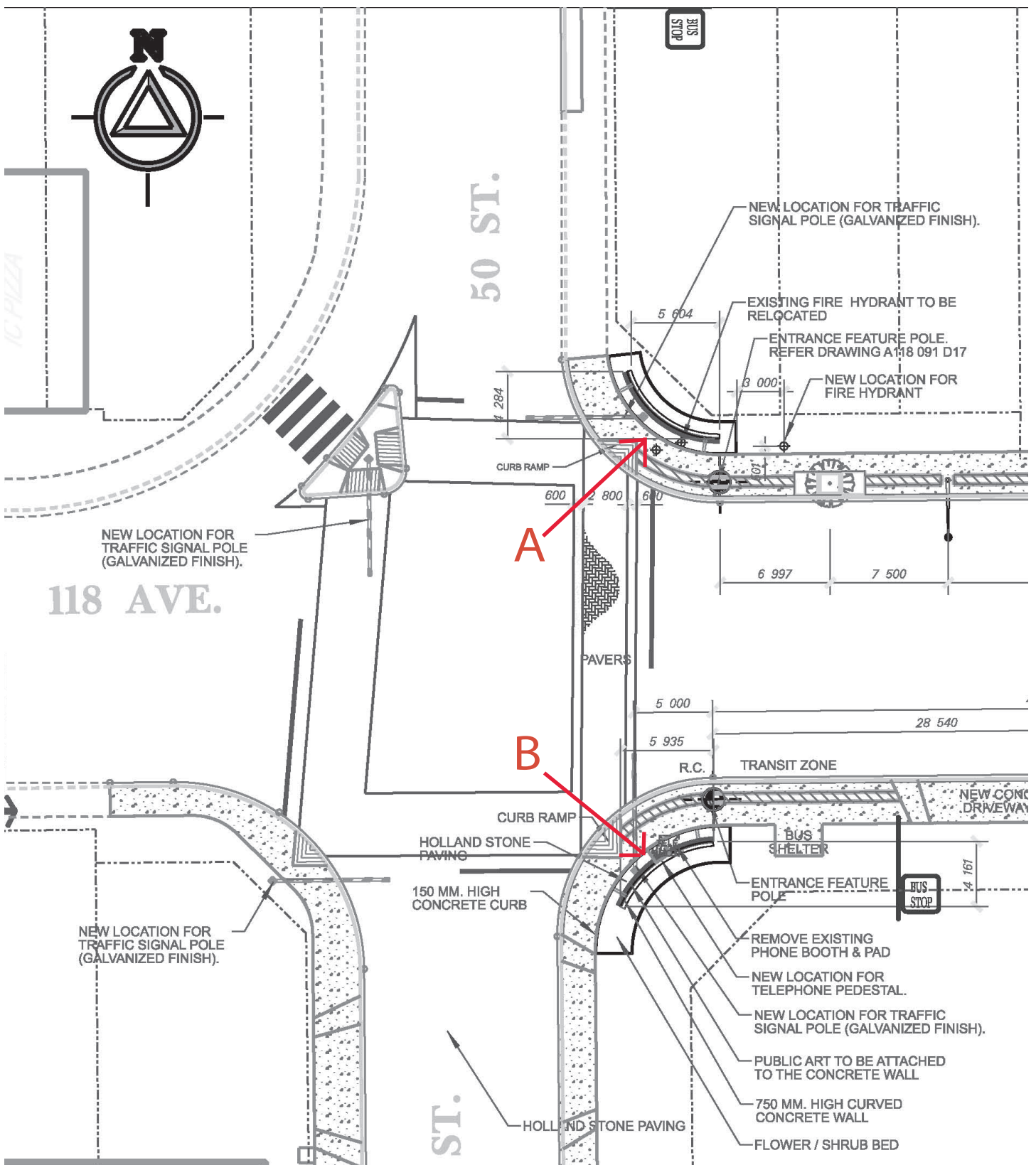
- Do not cause opportunity for access to restricted areas (i.e. do not build in such a manner as to allow climbing to areas not normally accessible to the public);
- Ensure artwork does not pose a risk of injury to the public (example: sharp points, slip hazards, etc.);
- Meet fire codes with respect to flammability, etc.;
- Artwork must be vandal resistant;
- Artwork must not interfere with the operation and serviceability of the building;
- Meet all Alberta building code standards.

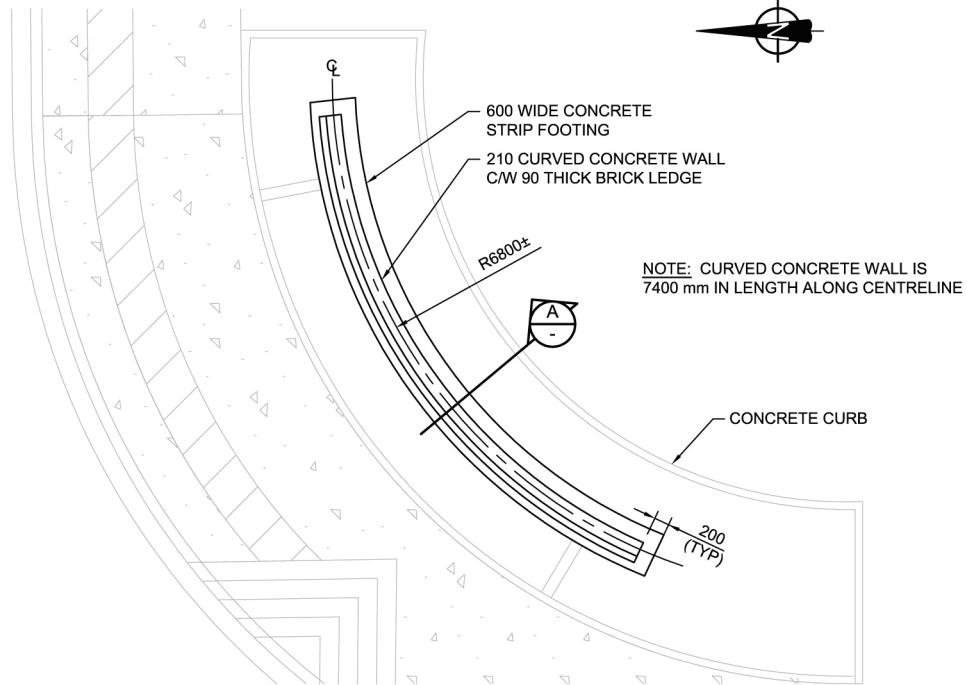
Entrance Feature Design at 50th Street and 118th Avenue (Curved concrete walls with public art installation)



Note:

- Total 2 curved wall features (one each located on either side of the 118th Avenue as shown on the site plan)

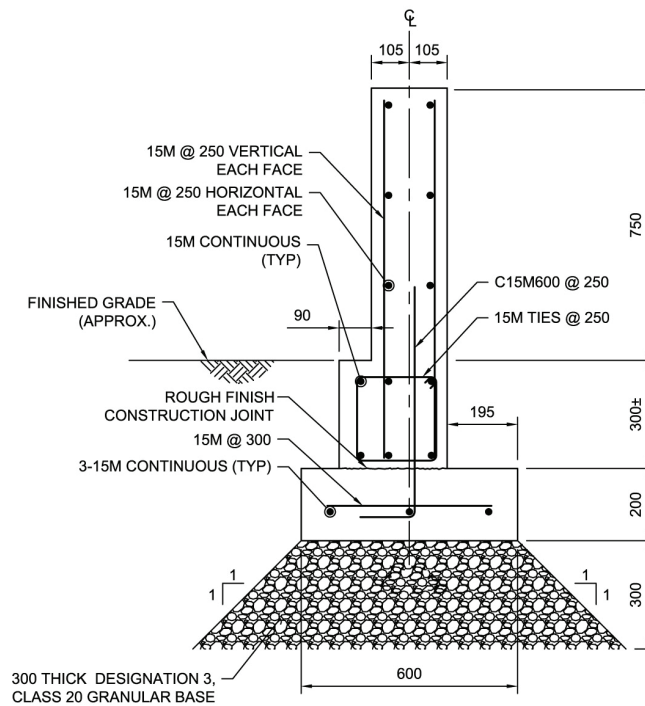




PLAN - CURVED CONCRETE WALL AT SOUTHEAST CORNER

(NORTHEAST CORNER SIMILAR)

1:50



TYPICAL WALL SECTION

1:10

Terms of Competition

Selection Process:

The winning artwork will be chosen through a one-stage jury process unless designated otherwise by the Edmonton Arts Council. Selection Committee members will include representation as follows: City of Edmonton staff person, an architect or engineer, artist representatives and a community member. The Selection Committee is under no obligation to choose any finalists. All decisions of the Selection Committee are final. The City of Edmonton and the Edmonton Arts Council reserve the rights to revoke the competition for the Beverly Streetscape public art call for submissions or public art project.

Communication with the Selection Committee:

The Edmonton Arts Council will be responsible for all communication, either verbally or in writing, between artists making submissions and members of the Selection Committee. Any communication between applicants and Selection Committee members regarding submissions or the competition may result in disqualification.

Competition Entry Requirements:

Please do not bind, staple applications, or use plastic cover sheets.

Artists must submit the following in order to qualify for consideration in the competition:

- | | |
|--------------------------|---|
| 1. ENTRY FORM: | Complete and signed with contact information; |
| 2. PROPOSAL PACKAGE: | One summary of the proposed artwork (100 words or less);
One full written description of the proposed artwork (including detailed artist's concept, one selected artwork site location, size, materials and timeline); |
| 3. PROJECT IMAGES: | Preliminary two-dimensional representations, drawings, or renderings of the proposed artwork submitted on 8 ½" by 11" paper suitable for photocopying ; |
| 4. BUDGET FORM: | Budget for the proposed artwork not to exceed the maximum, all inclusive total of \$23,000 CAD (including but not limited to: installation for relevant site locations, transportation, artist's fee, studio fees, materials, GST and insurance); |
| 5. CURRICULUM VITAE: | Detailing professional experience as an artist and other relevant information; |
| 6. LETTERS OF REFERENCE: | Three (3) letters of reference, with referer contact information, (letters should pertain to past experience, completed projects, bodies of work and/or related expertise); |

- | | |
|-------------------------|---|
| 7. VISUAL DOCUMENTATION | Of previous public artworks or artworks which best illustrate a related body of artwork to the proposal. Include a maximum of 10 images (preferably jpeg, pdf or tiff format; minimum 150 dpi for approximately 6" x 9" images) on CD-ROM or DVD-ROM; |
| 8. DOCUMENTATION LIST: | All support materials and visual documentation must be clearly listed on a separate sheet and include details of photo credit, date, size, medium, etc; |
| 9. RETURN POSTAGE | Must be enclosed if the artist does not want their application retained as part of the Edmonton Public Art database. |

Deadline for Submissions:

Complete submissions must be received in office no later than 4:30 pm on Friday, January 14th, 2011.

Please note that applications will not be accepted by fax or email.

Submissions must be delivered to:

Beverly Entrance Feature Public Art Project
 c/o Edmonton Arts Council
 10440-108 Avenue
 Edmonton, Alberta
 Canada T5H 3Z9

Return of Submissions:

Following completion of the competition, applications will be kept on file and the artist's name added to the Edmonton Public Art database. If the artist does not want to have their application added to the database and indicates so on the entry form, application support materials will be returned when accompanied by return postage.

Loss or Damage: While every precaution will be taken to prevent loss or damage, the jury, the Edmonton Arts Council and their agents shall not be liable for any loss or damage, however caused.

Commission: The total commission for the artwork is \$23,000 CAD (including GST) and must cover all costs associated with the design, fabrication, and installation for relevant site locations of the artwork including but not limited to artist fees, materials, insurance, etc.

Original Work: The artist must guarantee that the artwork is original and does not violate the copyright of any other person.

Contract: The artist(s) will enter into a contract with the Edmonton Arts Council.

Copyright: The artist(s) must be prepared to assign ownership and License to Copyright of the artwork to the City of Edmonton. Reproduction rights may be negotiated. The artist may retain the right to be identified as the creator of the artwork. The City of Edmonton will not alter the artwork for purposes of maintenance, conservation, etc. without prior consultation with the artist. The City of Edmonton reserves the right to move or de-accession the artwork if necessary and will make every effort to notify the artist.

Sample Budget Form

Expenditures	Details	Cash or Estimated in-Kind Value
Administration costs (permits, documentation)		
Artist fees		
Materials and fabrication		
Transportation and installation (for relevant site locations):		
Insurance, General Sales Tax		
Contingency funds		
Total Expenditures (Not to exceed \$23,000 CAD Cash Value)		\$

Beverly Entrance Feature Public Art Project

Name:

Address:

City/Province:

Postal Code/Country:

Phone (home):

Phone (work):

Email Address:

Website (if applicable):

Please retain my application as part of the Edmonton Public Art artist database at the Edmonton Arts Council. (Check one.) YES NO

I, _____ (PRINT NAME) hereby make a Submission for the Beverly Entrance Feature Public Art Project and am in agreement with the Terms of Competition as outlined in the Information Package.

Applicant Signature

Date

Enclosures

Please do not bind, staple applications, or use plastic cover sheets.

1. ENTRY FORM
2. PROPOSAL PACKAGE (Project Summary & Project Description)
3. PROJECT IMAGES
4. BUDGET FORM
5. CURRICULUM VITAE
6. LETTERS OF REFERENCE
7. VISUAL DOCUMENTATION
8. VISUAL DOCUMENTATION LIST
9. RETURN POSTAGE (Only if application not retained for database)

Deliver To: Beverly Entrance Feature Public Art Project
c/o Edmonton Arts Council
10440-108 Avenue
Edmonton, Alberta
Canada T5H 3Z9

Deadline: Received in office no later than 4:30 pm Friday, January 14th, 2010

The information on this application is being collected under the authority of Section 33(c) of the FOIP Act and will be used by the Edmonton Arts Council to determine eligibility for Edmonton Arts Council Public Art programs. The aggregate data may be used for program planning and evaluation. All information collected by the Edmonton Arts Council is protected by the provisions of the FOIP Act. You may direct questions about the collection, use or disclosure of your personal information by this program to the Edmonton Arts Council at (780) 424-2787.